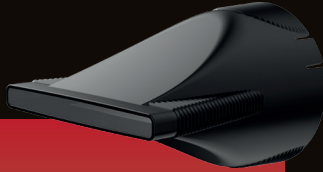


Gamma+®

# XCELL

## NOZZLES

Extreme  
(4.8 x 64 x 75 mm)



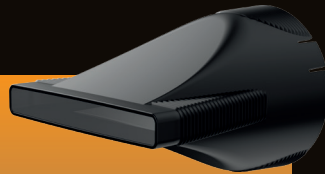
Extreme this is the narrowest nozzle of the lot. It directs a strong air flow in a small space. High temperature guaranteed. It is ideal to tame thick curly hair.

Delicate  
(5 x 75 x 75 mm)



Delicate designed for soft drying, it is perfect for thin and/or damaged hair. The delicate nozzle is often the best option for barbers.

Classic  
(7 x 64 x 75 mm)



Classic allows you to direct a strong airflow over a larger area. Suited for long hair.

Elegant  
(5 x 88 x 75 mm)



Elegant a larger nozzle for larger brushes. Ideal for drying with a brush.

WWW.GAMMAPLUSNA.COM FOLLOW US:   @GAMMAPLUSNA

 @GAMMASTYLECRAFTPRO